

Institutional and International Programs

Veronica Bacher, Manager, Institutional and International Programs, Office of Research Services





Acknowledgements

Dalhousie University is located in Mi'kma'ki, the ancestral and unceded territory of the Mi'kmaq. We are all Treaty people.

We recognize that African Nova Scotians are a distinct people whose histories, legacies and contributions have enriched that part of Mi'kma'ki known as Nova Scotia for over 400 years.



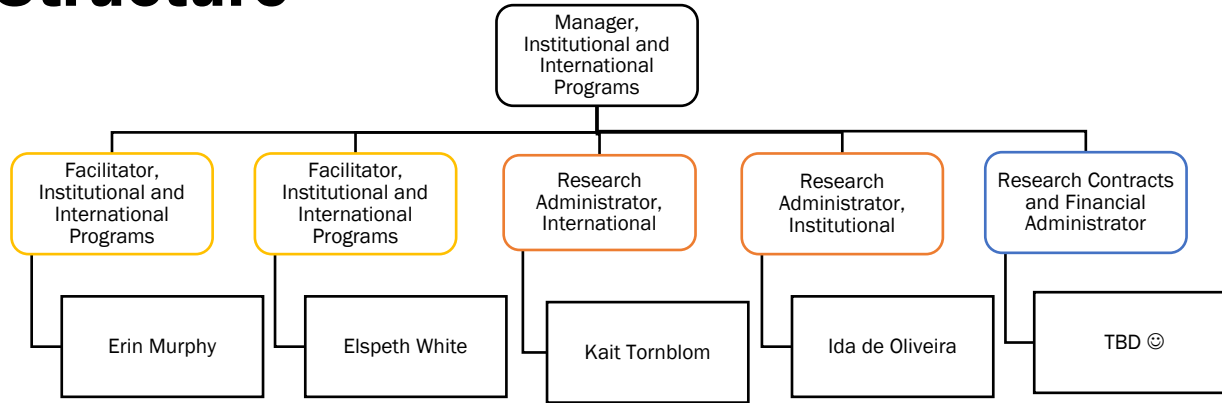
Agenda

1. Structure of the I&I Unit
2. International Programs
3. Institutional Programs
4. Pre-Award Considerations
5. Post-Award Considerations
6. Tips and Tricks from the I&I Unit





Institutional & International Programs Unit Structure

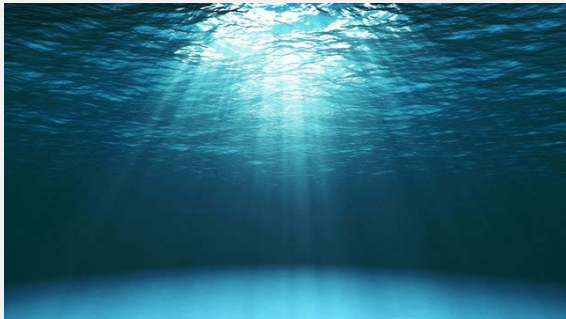




International Programs



International Programs



What are some aspects to consider in international programs?

- [Associated Costs of Research \(Overhead\)!](#)
- Compliance!
 - Audit requirements
 - [Conflict of Interest](#)
 - [Financial Conflict of Interest \(FCOI\)](#)
 - Other US Funder Compliance
- Foreign Currency!
- [PI Eligibility!](#)
 - Exemptions
 - Salary
- Many new forms and portals!



Institutional Programs



Institutional Programs



What are some aspects to consider in institutional programs?

- High level of institutional support and involvement
- Usually require additional commitments (space, matching funds, start-up funds, etc.)
- Often large-scale and complex
- Often research program-based vs. research project-based



Sample Institutional Programs Timelines

Funder	Pre-Award (from initial internal application to external submission)	Post-Award (from initial award to account opening)
CFI-JELF	4-8 months*	12 months*
CFI- IF	12 months*	12 months*
CRC	18 months (includes candidate recruitment process)	1 month

Internal deadlines are one month prior to the funder deadline

*If renovations are included, include at least 6 additional months to allow for coordination with Facilities Management



Pre-Award Considerations (I&I)

- Investigator Checklist submitted via ROME0
 - Includes sub-awards!
 - Matching Funds
 - Internal Deadlines
 - **If institutional signature is required,** internal ORS deadline is at least ten business days before the external deadline*
- *Lead institution may have internal deadlines





Post-Award Procedures



Post-Award Considerations (International)

- Agreements and Sub-Awards
- Transfers of Funds to Partners
- Audits and Compliance
- Reporting
- Timelines
 - Legal Review





Post-Award Considerations (Institutional)

- Matching Funds
- Award Finalization (CFI)
- Amendments
- Agreements, Transfers of Funds, Subawards
- Reporting





Tips and Tricks from the I&I Unit



Pre-Award

- Pre-review is critical to success
- Peer review in grants often contributes to success
- [ORS Newsletter](#) often has information about upcoming competitions and a contact in ORS
- Chat with ORS Facilitators earlier in the process, if known – prevents last-minute hiccups
- Adhering to internal timelines is always appreciated
- Pre-award review ensures fewer speedbumps at Post-award

Post-Award

- Researcher participation is valued!
- Forward competition results to ORS if received by the researcher
- Compliance 😊
- Having “ducks in a row” can expedite post-award administration





Questions?